



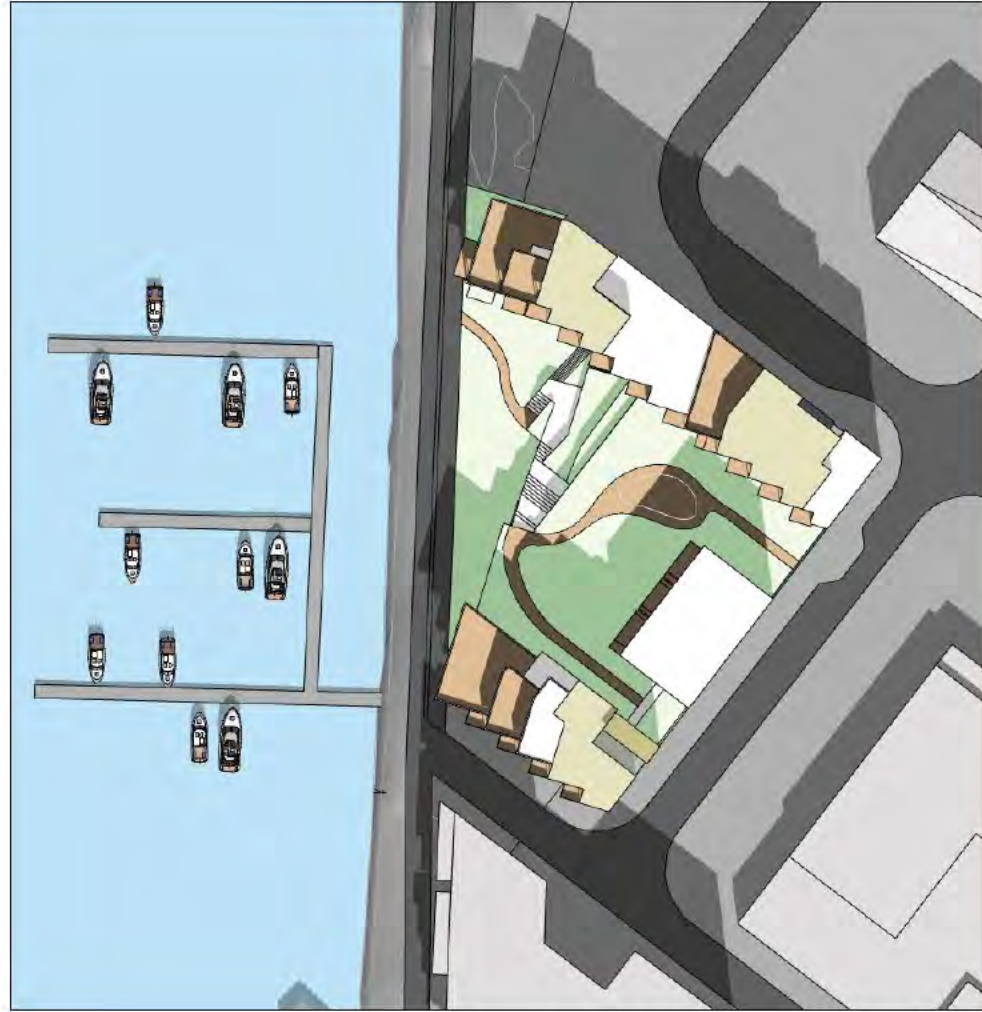
21. mars 15.00



23. juni 18.00

Ca. 80 leiligheter medfører krav om ca. 2 000 m² felles uteopphold, jfr. områdeplanens bestemmelser pkt. 3.10.
 1 700 m² dekkes opp innenfor planområdet.
 300 m² av disse dekkes opp av park utenfor planområdet.
 Det er krav om én sandlekeplass (100 m²) pr 25 leiligheter.
 Her er avsatt 320 m² til sandlekeplass.

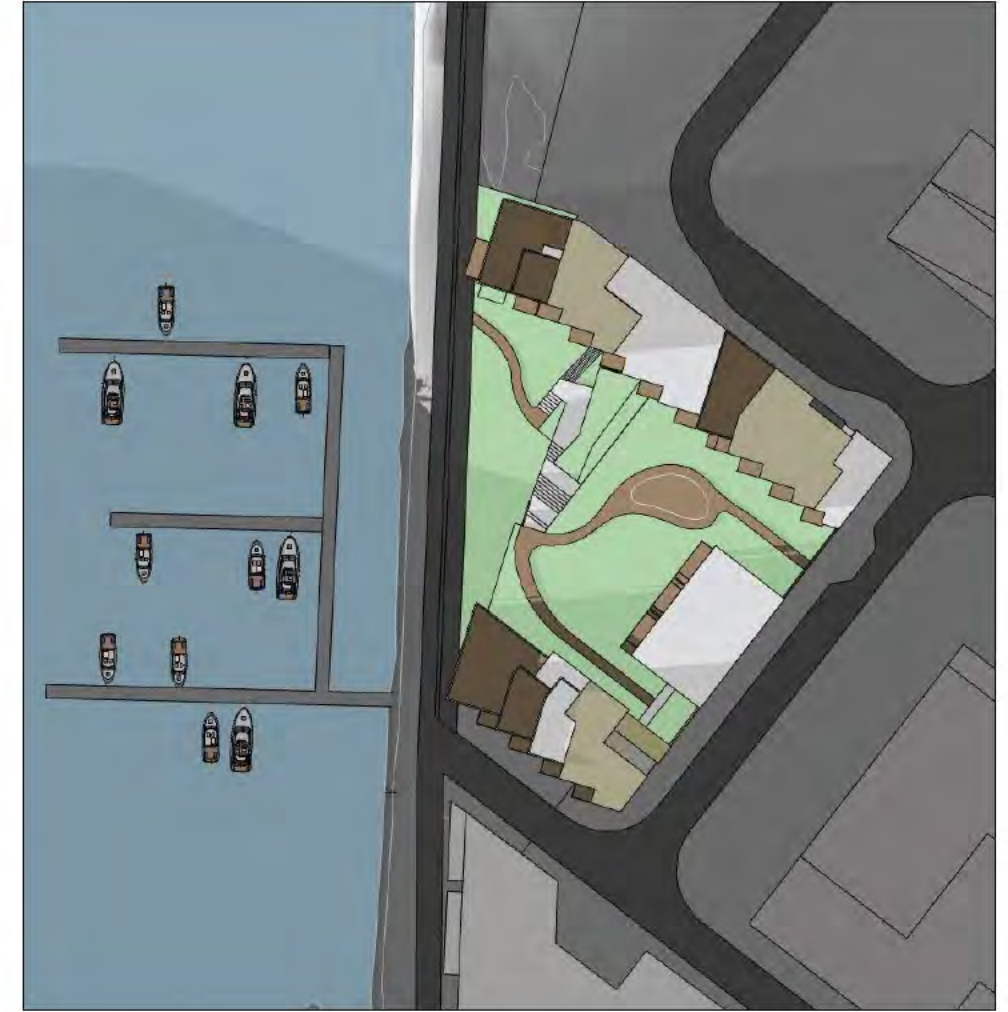
21. mars kl 15.00 har 67 % av uteoppholdsarealet innenfor planområdet sol.
 23. juni kl 18.00 har 88 % av uteoppholdsarealet innenfor planområdet sol.



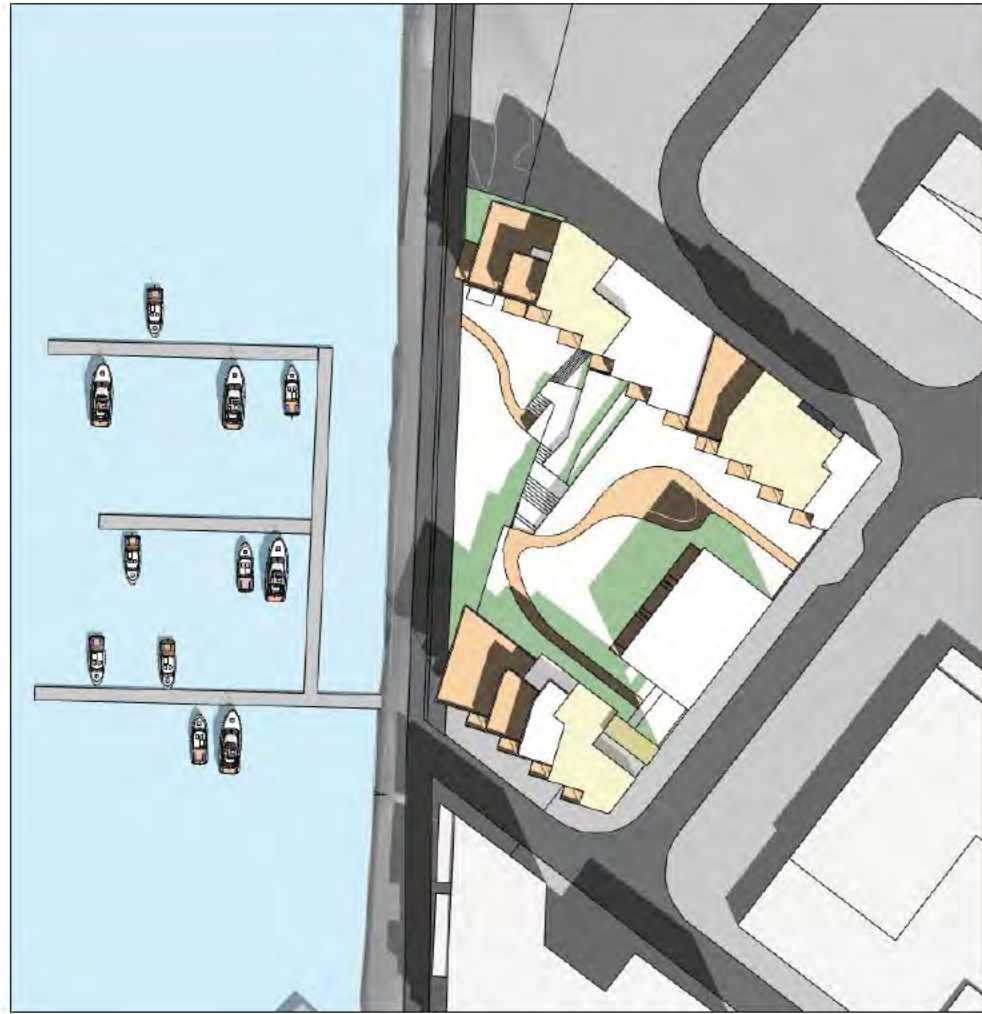
12.00



15.00



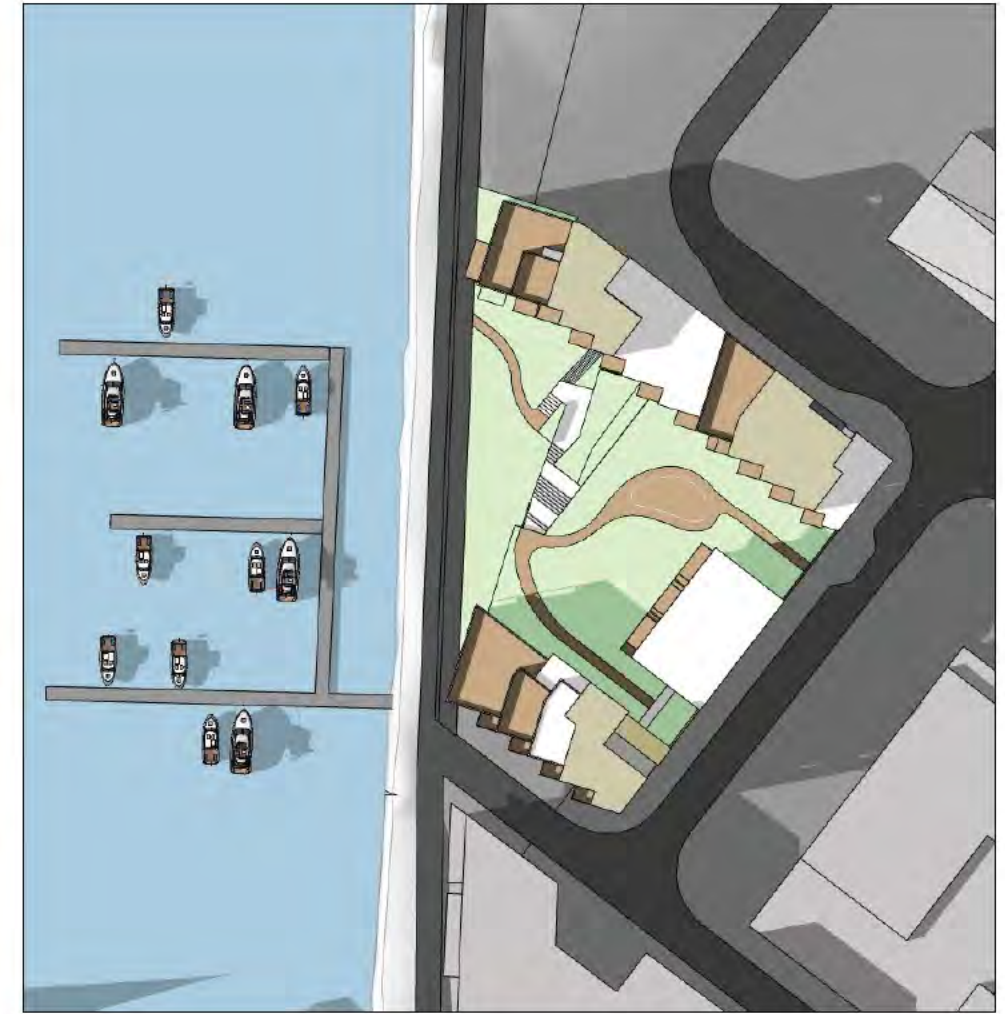
18.00



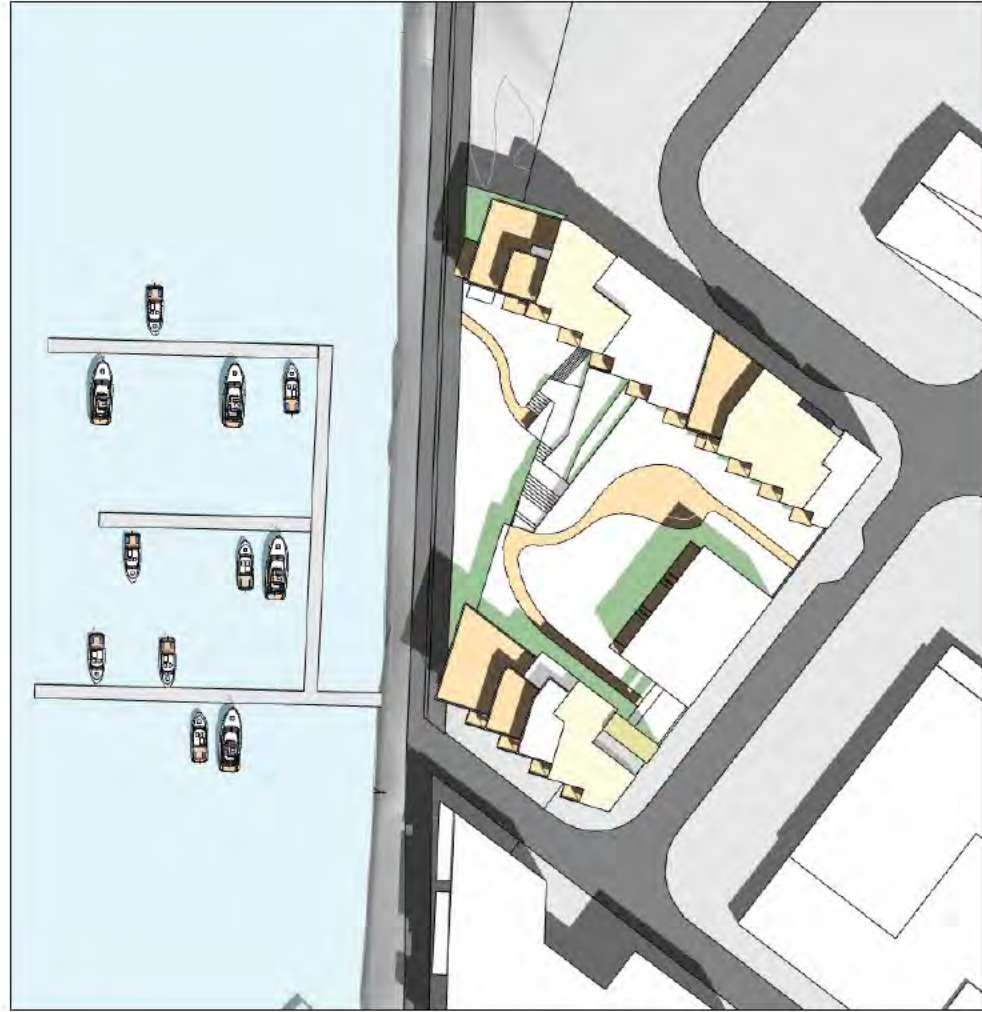
12.00



15.00



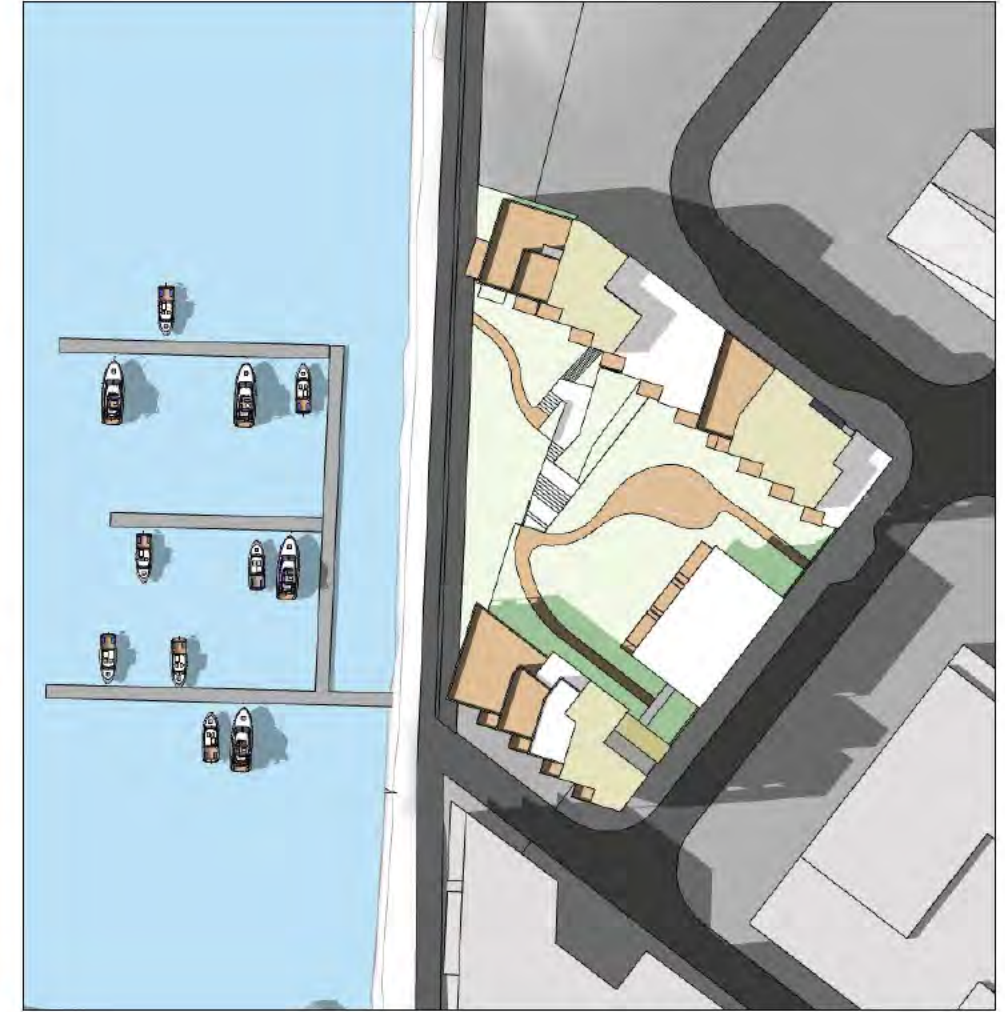
18.00



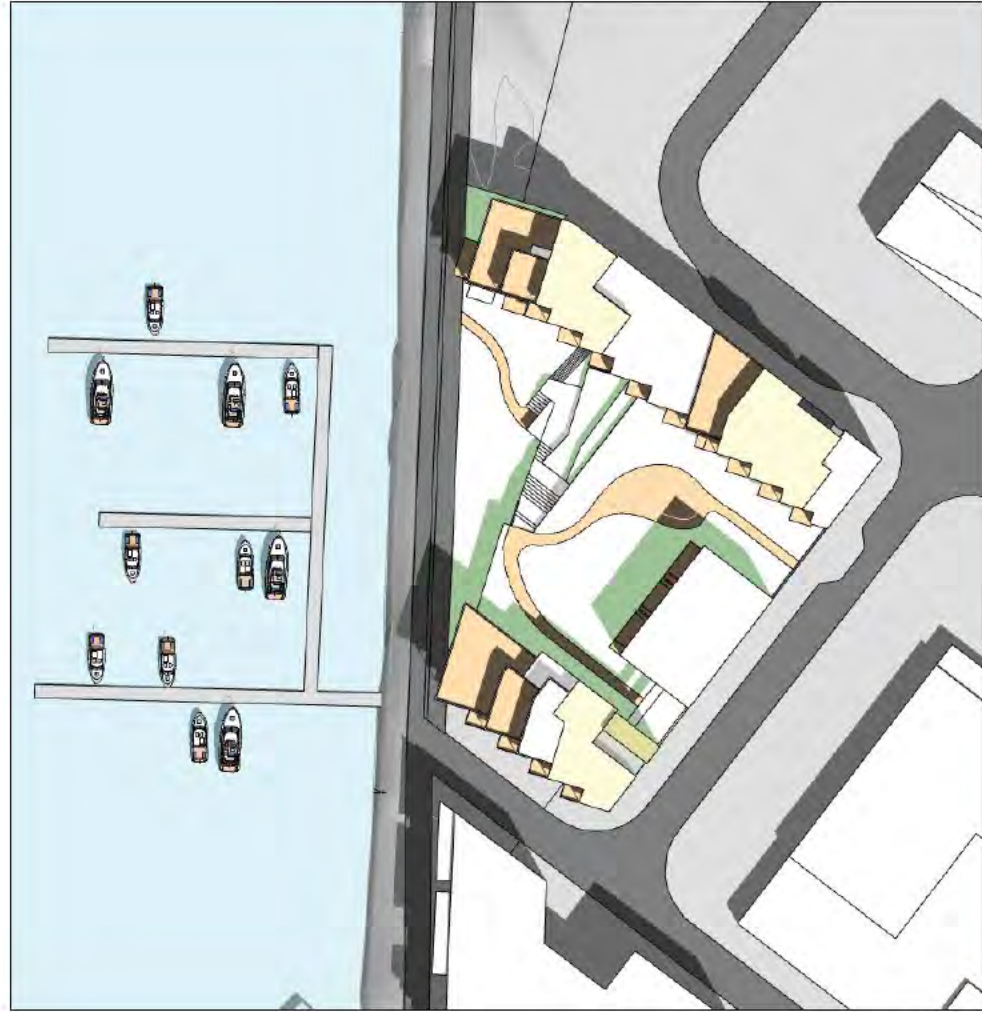
12.00



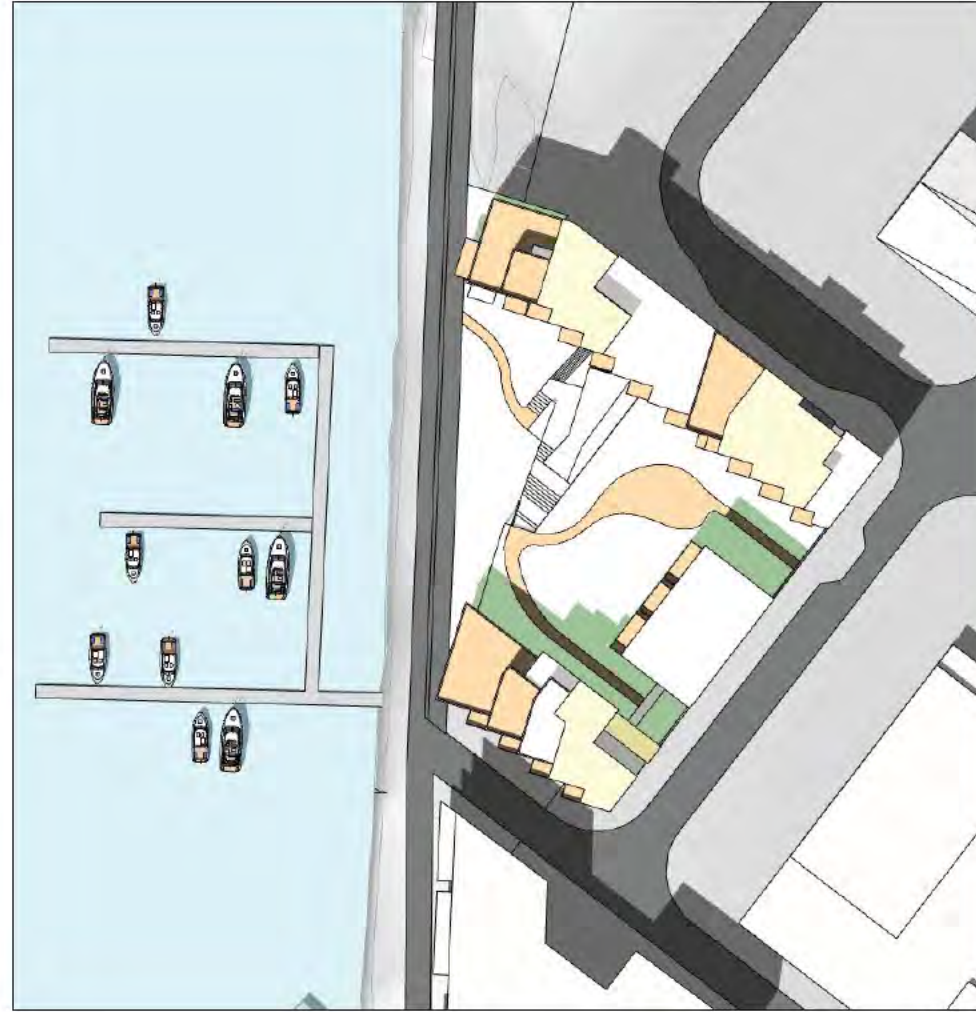
15.00



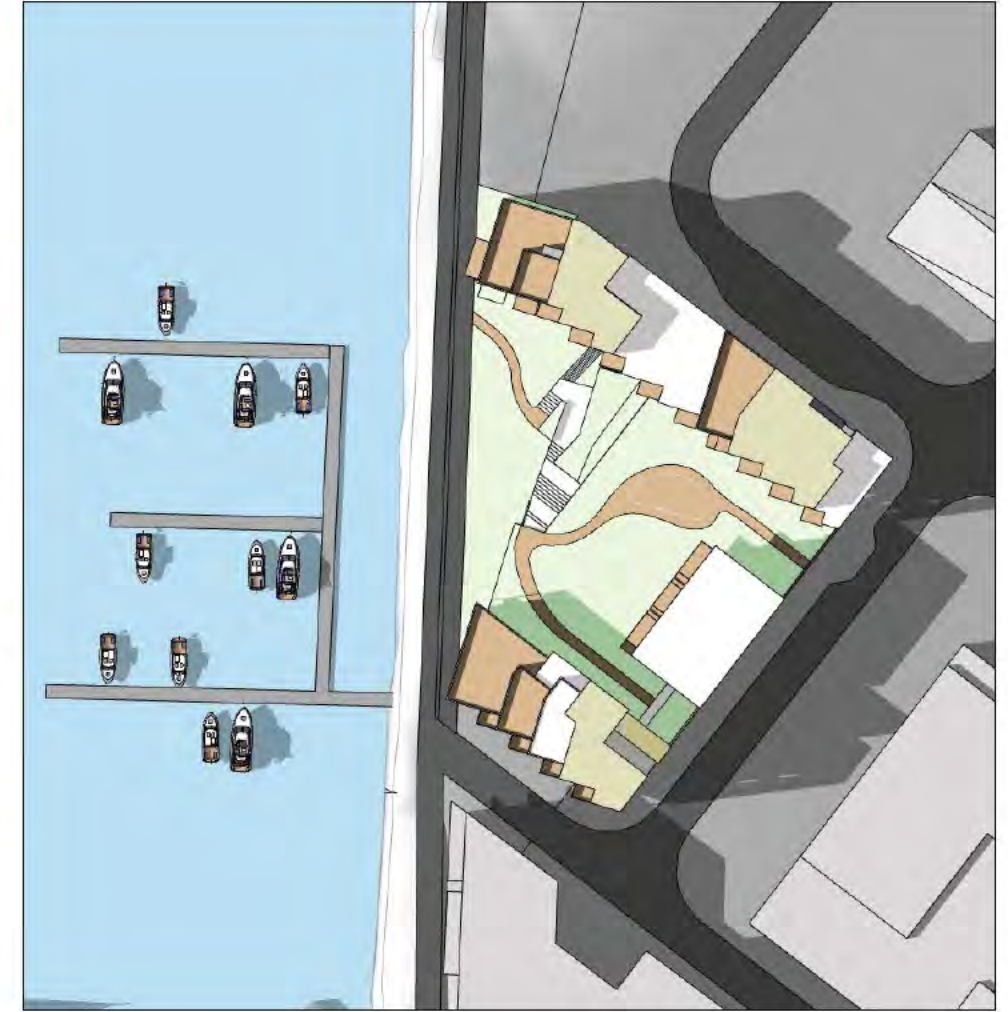
18.00



12.00



15.00



18.00

